

Ubuntu Operating System and Flavours

Ubuntu Operating System

- Ubuntu is a Debian-based Linux operating system and distribution for personal computers, smartphones and network servers.
- It uses Unity as its default desktop environment.
- It is based on free software and named after the Southern African philosophy of ubuntu (literally, "human-ness"), which often is translated as "humanity towards others" or "the belief in a universal bond of sharing that connects all humanity".

Ubuntu Operating System

- Development of Ubuntu is led by UK-based Canonical Ltd., a company owned by South African entrepreneur Mark Shuttleworth.
- Canonical generates revenue through the sale of technical support and other services related to Ubuntu.
- The Ubuntu project is publicly committed to the principles of open-source software development; people are encouraged to use free software, study how it works, improve upon it, and distribute it.

Ubuntu Operating System - Release

- › Ubuntu is built on Debian's architecture and infrastructure, to provide Linux server, desktop, phone, tablet and TV operating systems
- › Ubuntu releases updated versions predictably every six months, and each release receives free support for nine months (eighteen months prior to 13.04) with security fixes, high-impact bug fixes and conservative, substantially beneficial low-risk bug fixes.
- › The first release was in October 2004.

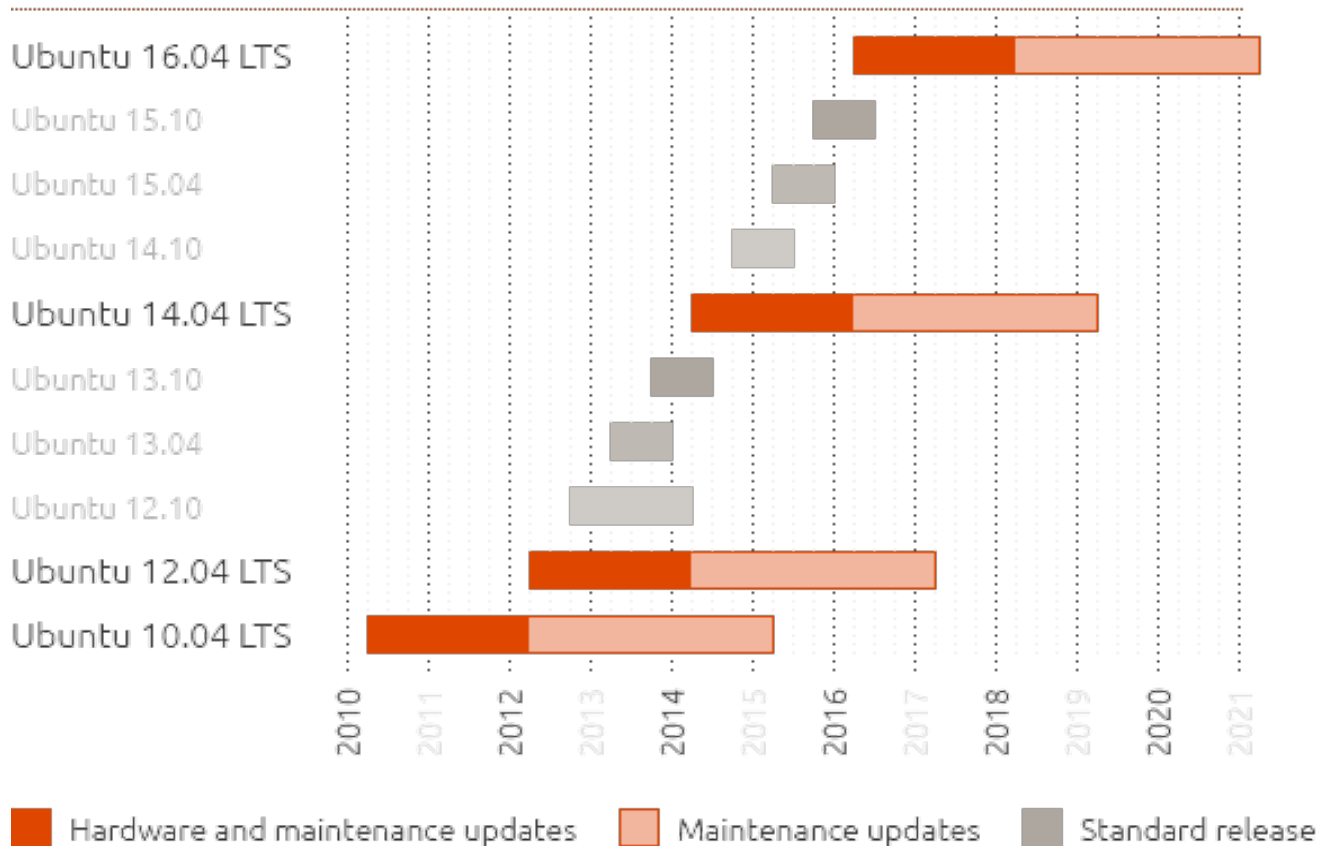
Ubuntu Operating System - LTS

- It was decided that every fourth release, issued on a two-year basis, would receive long-term support (LTS).
- Long-term support includes updates for new hardware, security patches and updates to the 'Ubuntu stack' (cloud computing infrastructure).
- The first LTS releases were supported for three years on the desktop and five years on the server; since Ubuntu 12.04 LTS, desktop support for LTS releases was increased to five years as well.
- LTS releases get regular point releases with support for new hardware and integration of all the updates published in that series to date.

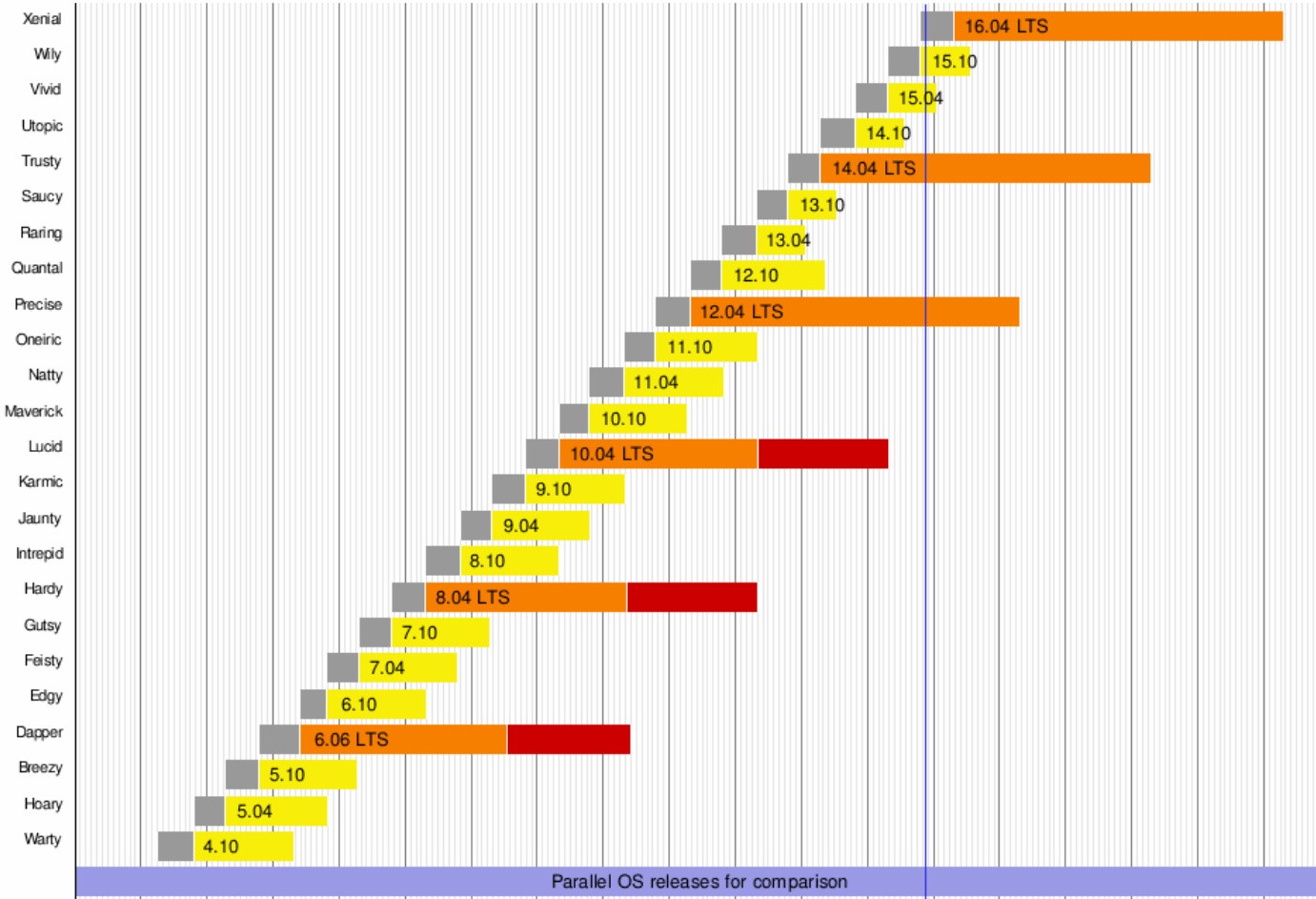
Ubuntu Operating System

- Ubuntu packages are based on packages from Debian's unstable branch.
- Both distributions use Debian's deb package format and package management tools (APT and Ubuntu Software Center).
- Debian and Ubuntu packages are not necessarily binary compatible with each other, however; packages may need to be rebuilt from source to be used in Ubuntu.
- Many Ubuntu developers are also maintainers of key packages within Debian.

Ubuntu LTS release cycle



Ubuntu release timeline





The smartest way to manage bare metal

MAAS 1.9 is here.

Get started with MAAS

- Overview
- Cloud
- Server
- Desktop
- Ubuntu Kylin
- Alternative downloads

LATEST NEWS FROM INSIGHTS

MAAS Setup:

Hardware Setup:

Introduction:

NFV does not equal

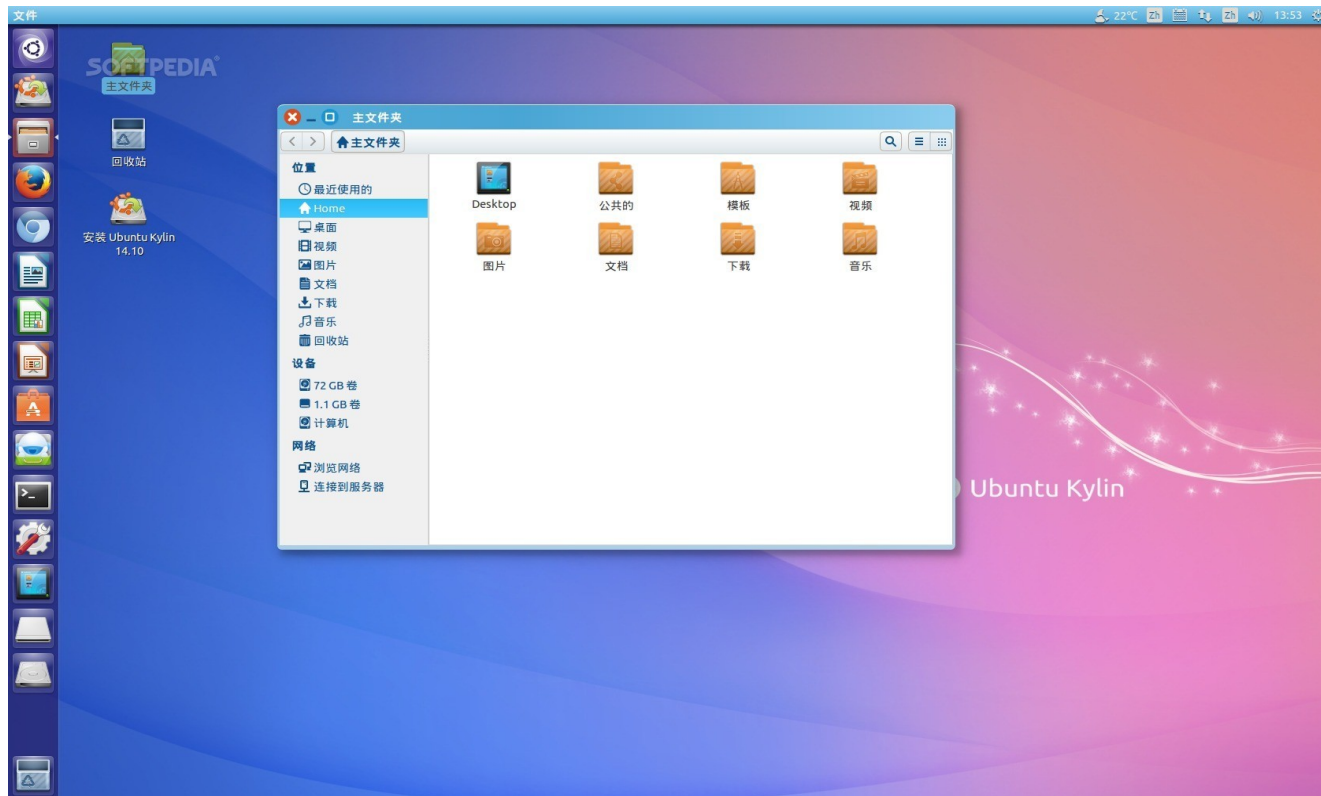
Ubuntu Variants

- › UbuntuKylin
- › Ubuntu Server
- › Ubuntu Touch
- › Ubuntu GNOME
- › Ubuntu MATE
- › Kubuntu
- › Lubuntu
- › Xubuntu
- › Edubuntu
- › MythBuntu
- › Ubuntu Studio
- › Blackbuntu

Ubuntu Kylin

- Ubuntu Kylin is the official Chinese version of the Ubuntu computer operating system.
- It has been described as a "loose continuation of the Chinese Kylin OS".
- In 2013, Canonical reached an agreement with the Ministry of Industry and Information Technology of the People's Republic of China to co-create and release a Ubuntu-based OS with features targeted at the Chinese market.
- Ubuntu Kylin is intended for desktop and laptop computers

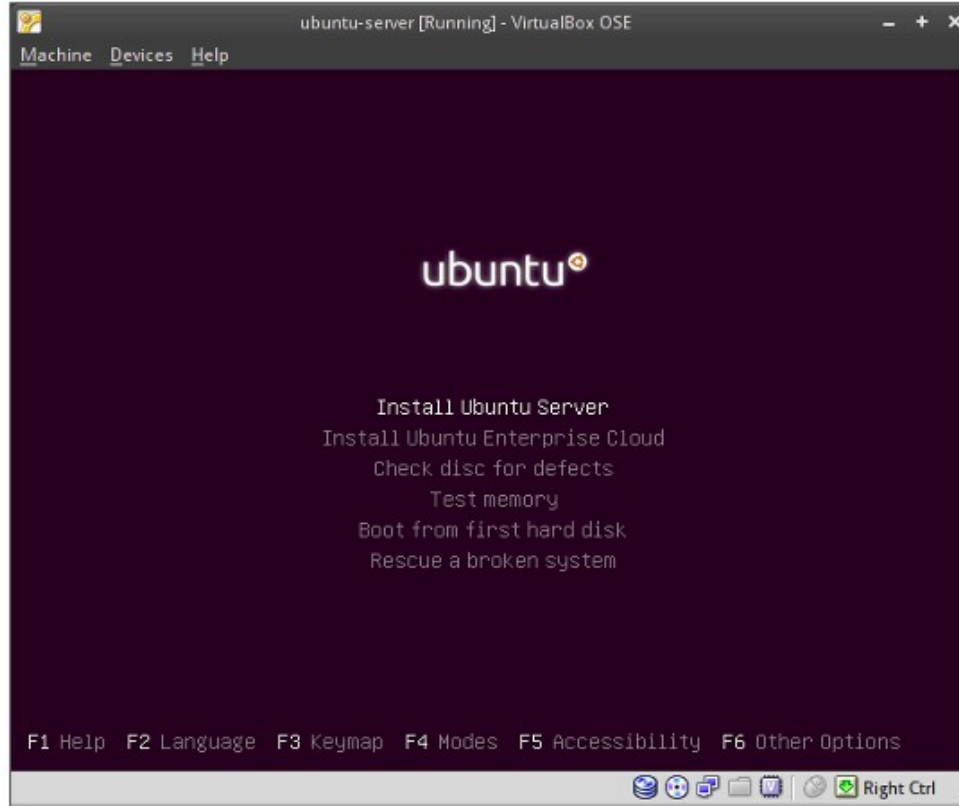
Ubuntu Kylin



Ubuntu Server

- Ubuntu has a server edition that uses the same APT repositories as the Ubuntu Desktop Edition.
- The differences between them are the absence of an X Window environment in a default installation of the server edition (although one can easily be installed including Unity, GNOME, KDE or Xfce) and the installation process.
- The server edition uses a screen mode character-based interface for the installation, instead of a graphical installation process.
- Ubuntu 14.04 LTS Server Edition includes MySQL 5.5, OpenJDK 7, Samba 4.1, PHP 5.5, Python 2.7.

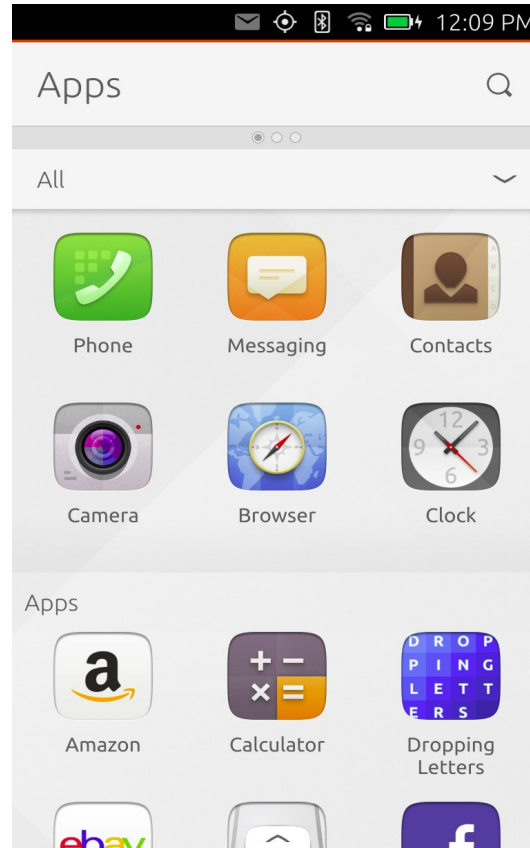
Ubuntu Server



Ubuntu Touch

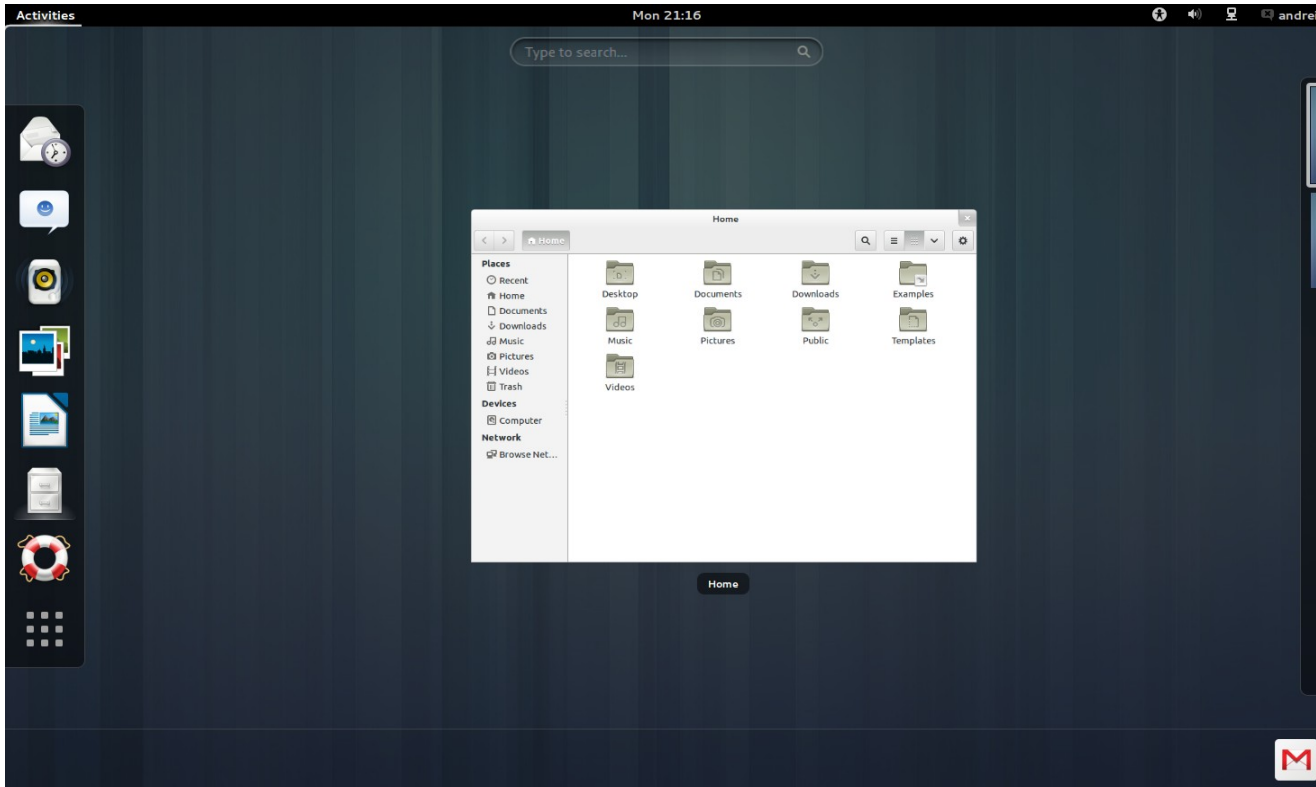
- Ubuntu Touch (also known as Ubuntu Phone) is a mobile version of the Ubuntu operating system developed by Canonical UK Ltd and the Ubuntu community.
- It is designed primarily for touchscreen mobile devices such as smartphones and tablet computers.

Ubuntu Touch



Ubuntu GNOME

- › Ubuntu GNOME (formerly Ubuntu GNOME Remix) is a Linux distribution and distributed as free and open source software.
- › From version 13.04 onwards, it is an official "flavour" of the Ubuntu operating system which uses a pure GNOME desktop environment rather than the Unity graphical shell.
- › The project began as an unofficial "remix" because some users preferred the GNOME 3 desktop over Unity.
- › Ubuntu GNOME 12.10 Quantal Quetzal was the first stable version released on 18 October 2012
- › Web: <http://ubuntugnome.org>



Ubuntu MATE

- › Ubuntu MATE is a free and open source Linux distribution and an official derivative of Ubuntu.
- › Its main differentiation from Ubuntu is that it uses the MATE desktop environment as its default user interface, based on GNOME 2 which was used for Ubuntu versions prior to 11.04, instead of the Unity graphical shell that is the default user interface for the Ubuntu desktop.
- › The Ubuntu MATE project was founded by Martin Wimpress and Alan Pope and began as an unofficial derivative of Ubuntu, using an Ubuntu 14.10 base for its first release.
- › Web: <http://ubuntu-mate.org>

ubuntu MATE



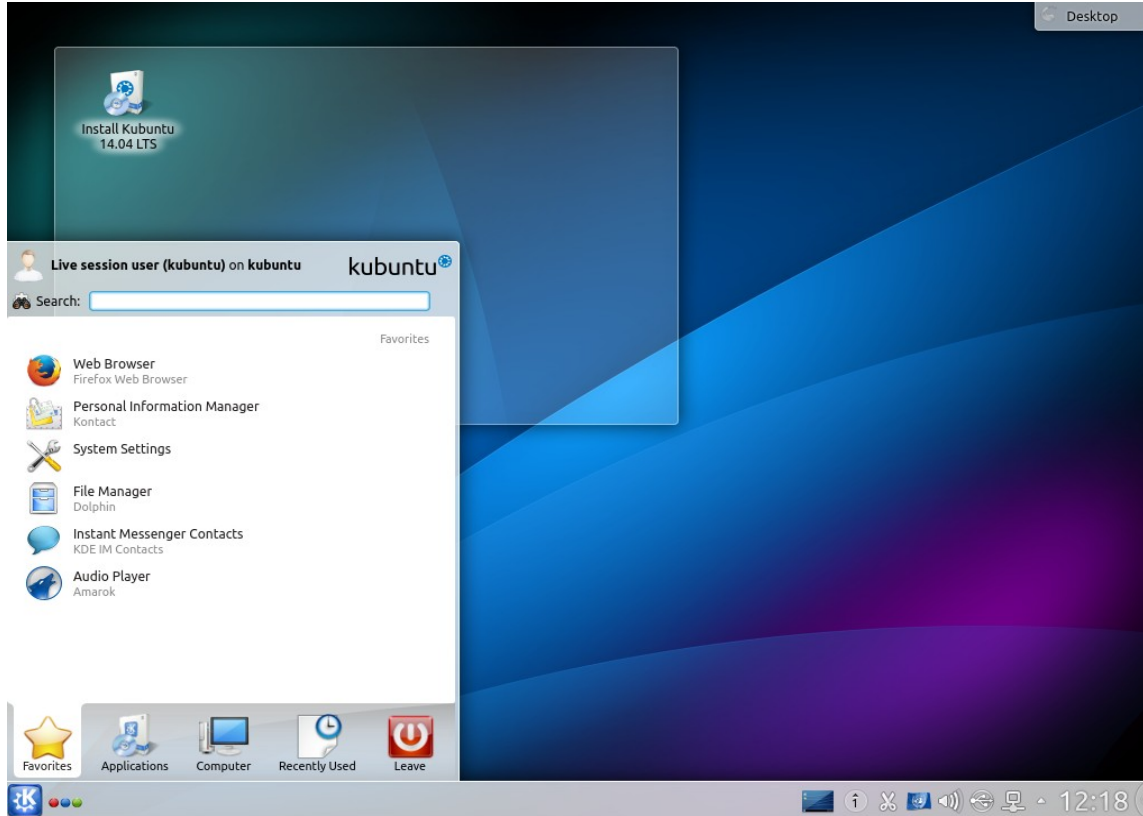
The screenshot shows the Ubuntu MATE 15.10 desktop environment. The desktop background is a green and blue gradient with a large, faint Ubuntu logo. On the left side, there is a vertical dock with icons for 'Home', 'Install Ubuntu MATE 15.10', '11g-fat32', '40G', and 'STORAGE'. The top panel displays 'Applications Places System' and system status icons including volume, network, and temperature (1°C), along with the date and time 'Sun Nov 22, 15:55'. A central dialog box titled 'Welcome to Ubuntu MATE' is open, featuring the text: 'Welcome to Ubuntu MATE! Thank you for joining our community. Each menu below will take you to a little page that will help to explain what Ubuntu MATE is, get you orientated with your new operating system and guide you through some initial configuration.' The dialog box contains three columns of buttons: 'Documentation' (Introduction, Features, Getting Started), 'Support' (Community, Chat Room, Install), and 'Project' (Get Involved, Shop, Donate). The 'Install' button is highlighted in green. At the bottom of the dialog box, there are social media icons and a 'Close' button. The taskbar at the bottom shows the 'Welcome to Ubuntu MATE' window, a terminal window, and a 'Wikimedia Commons' window. A notification in the bottom right corner says 'Click to switch to "Workspace 3"'. The system tray on the far right includes icons for network, volume, and power.

Kubuntu

- Kubuntu is an official flavour of the Ubuntu operating system which uses the KDE Plasma Desktop instead of the Unity graphical environment.
- As part of the Ubuntu project, Kubuntu uses the same underlying systems.
- Every package in Kubuntu shares the same repositories as Ubuntu, and it is released regularly on the same schedule as Ubuntu.
- Kubuntu was sponsored by Canonical Ltd. until 2012, and then directly by Blue Systems.
- Web: <http://kubuntu.org>



kubuntu



Desktop

Install Kubuntu
14.04 LTS

Live session user (kubuntu) on kubuntu kubuntu

Search:

Favorites

- Web Browser
Firefox Web Browser
- Personal Information Manager
Kontact
- System Settings
- File Manager
Dolphin
- Instant Messenger Contacts
KDE IM Contacts
- Audio Player
Amarok

Favorites Applications Computer Recently Used Leave

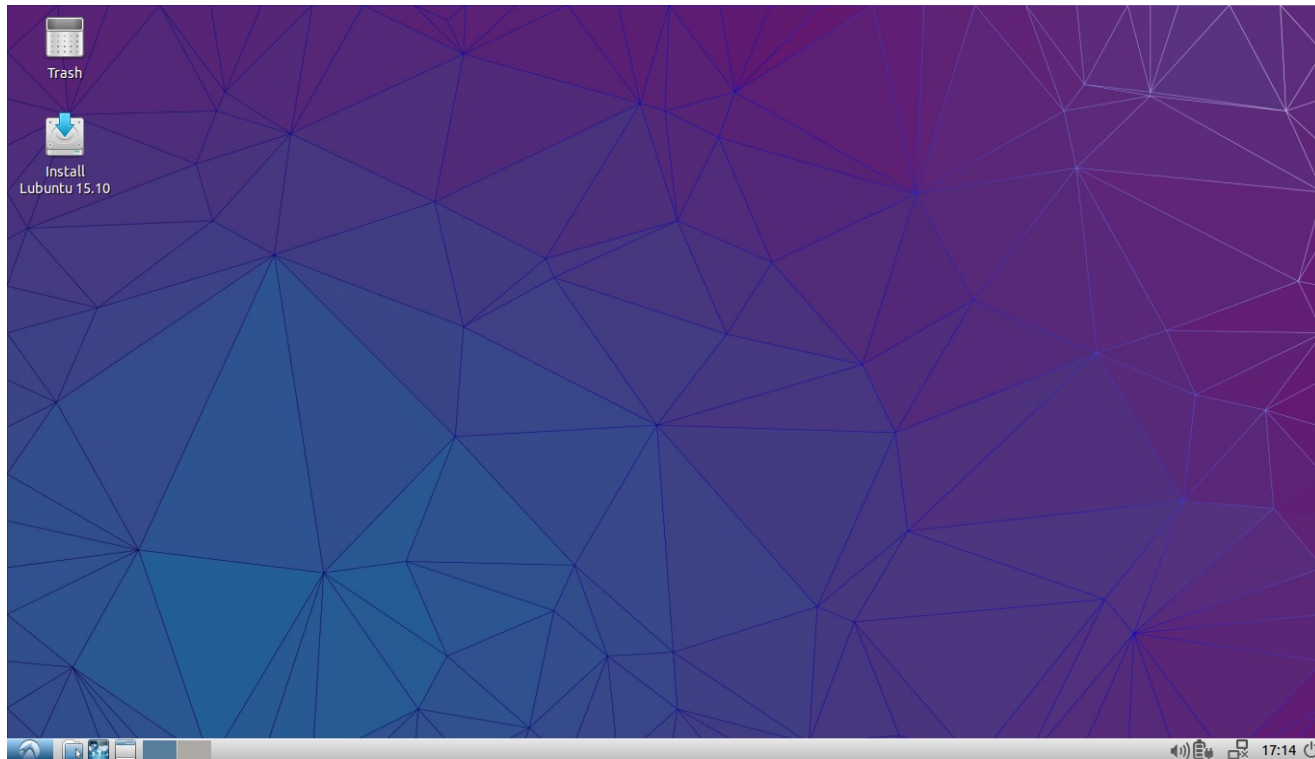
12:18

Lubuntu

- › Lubuntu is a lightweight Linux distribution based on Ubuntu but using the LXDE desktop environment in place of Ubuntu's Unity shell and GNOME desktop. LXDE is touted as being "lighter, less resource hungry and more energy-efficient".
- › Lubuntu is intended to be a low-system-requirement, low-RAM environment for netbooks, mobile devices, and older PCs.
- › The name Lubuntu is a portmanteau of LXDE and Ubuntu. LXDE stands for Lightweight X11 Desktop Environment
- › Web: <http://lubuntu.net>

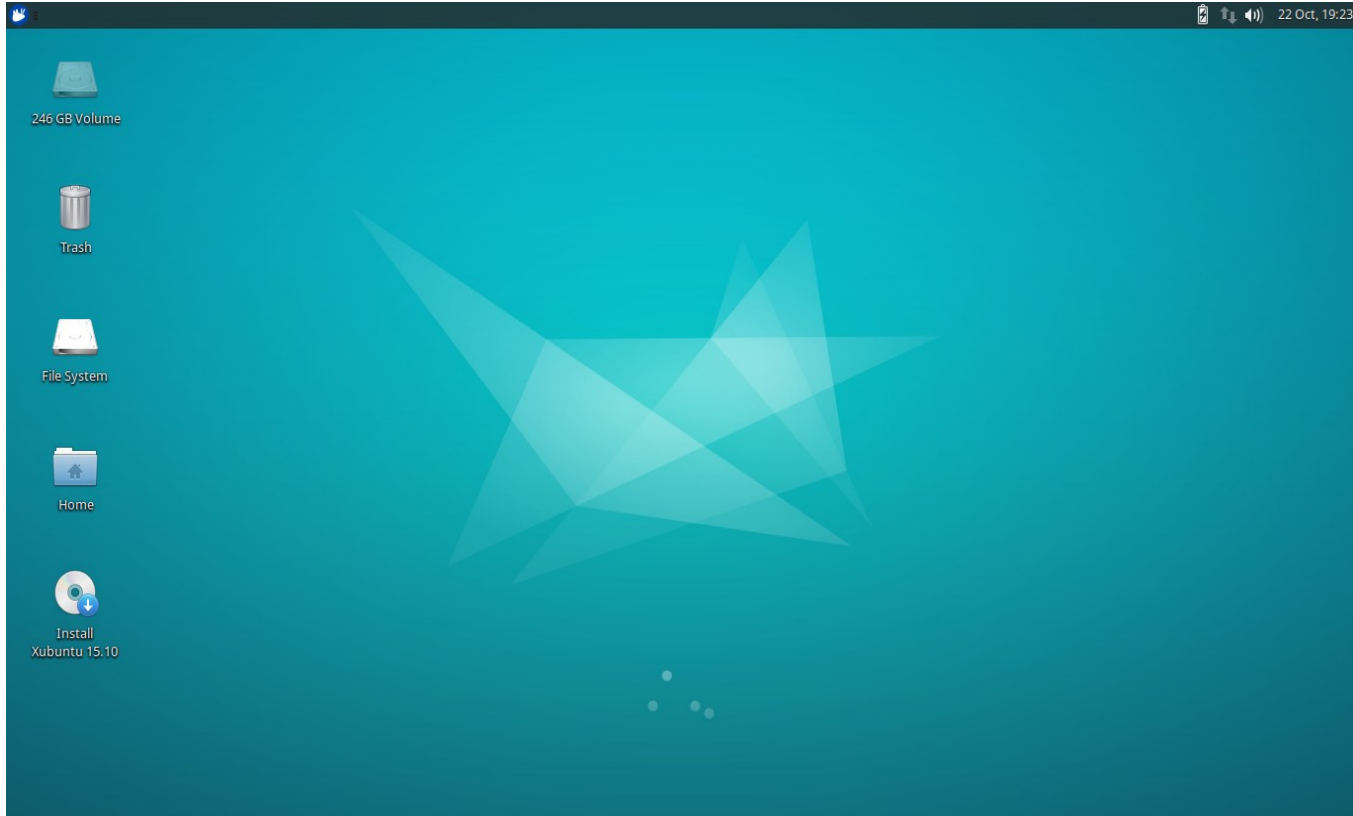
Lubuntu

Light & Fast Linux for Human Beings



Xubuntu

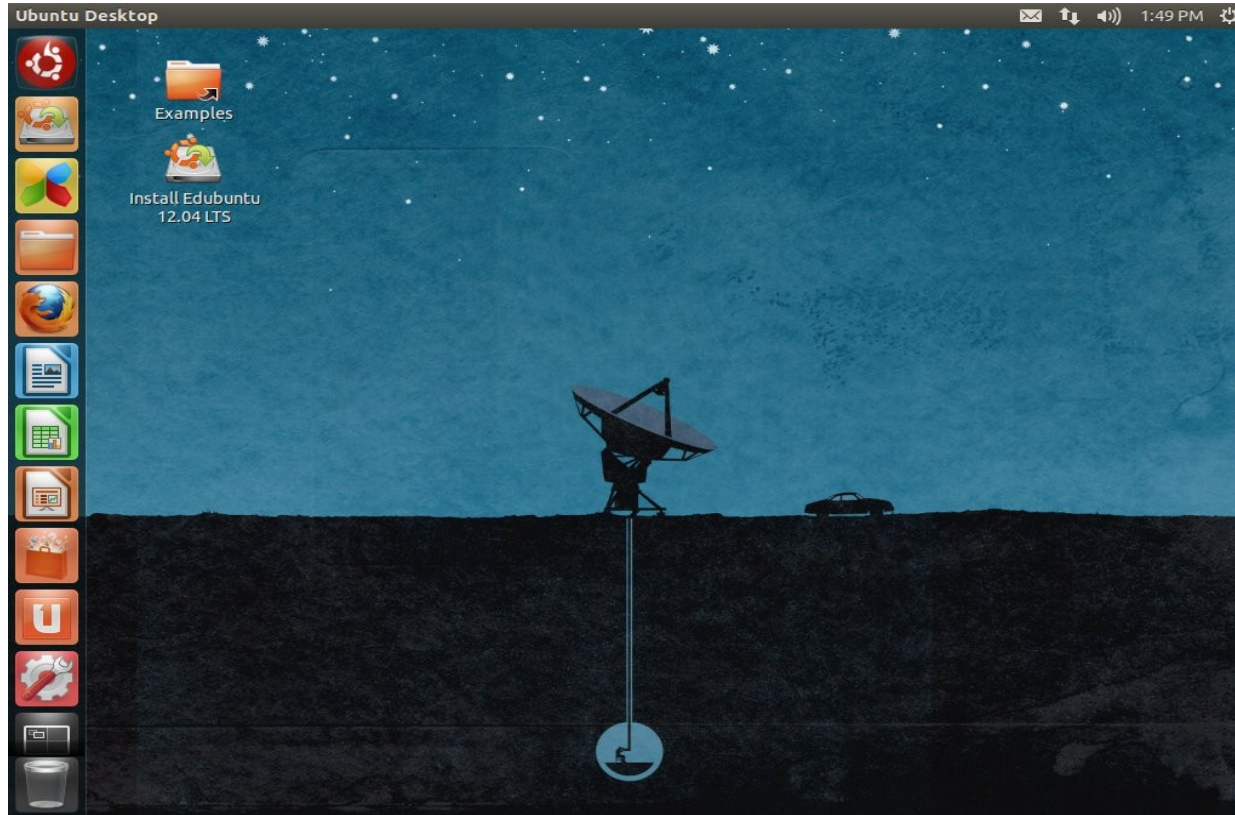
- Xubuntu is a Canonical Ltd.-recognized, community-maintained derivative of the Ubuntu operating system.
- The name Xubuntu is a portmanteau of Xfce and Ubuntu, as it uses the Xfce desktop environment, instead of Ubuntu's Unity.
- Web: <http://xubuntu.org>



Edubuntu

- Edubuntu, also previously known as Ubuntu Education Edition, is an official derivative of the Ubuntu operating system designed for use in classrooms inside schools, homes and communities.
- Edubuntu has been developed in collaboration with teachers and technologists in multiple countries.
- Edubuntu is built on top of the Ubuntu base, incorporates the LTSP thin client architecture and several education-specific applications, and is aimed at users aged 6 to 18.
- It is designed for easy installation and ongoing system maintenance.
- Web: <http://edubuntu.org>

edubuntu[®]



Mythbuntu

- Mythbuntu is a media center operating system (OS).
- It is based on Ubuntu, integrates the MythTV Media center software as its main function, and does not install with all of the programs included with Ubuntu.
- Following the principles of KnoppMyth and Mythdora, Mythbuntu is designed to simplify the installation of MythTV on a home theater PC.
- After Mythbuntu has been installed the MythTV setup program begins in which it can be configured as a frontend (a media viewer), backend (a media server), or combination of the two.
- Web: <http://mythbuntu.org>

mythbuntu

NCIS

7:45 PM

The Inside Man

Not Recording

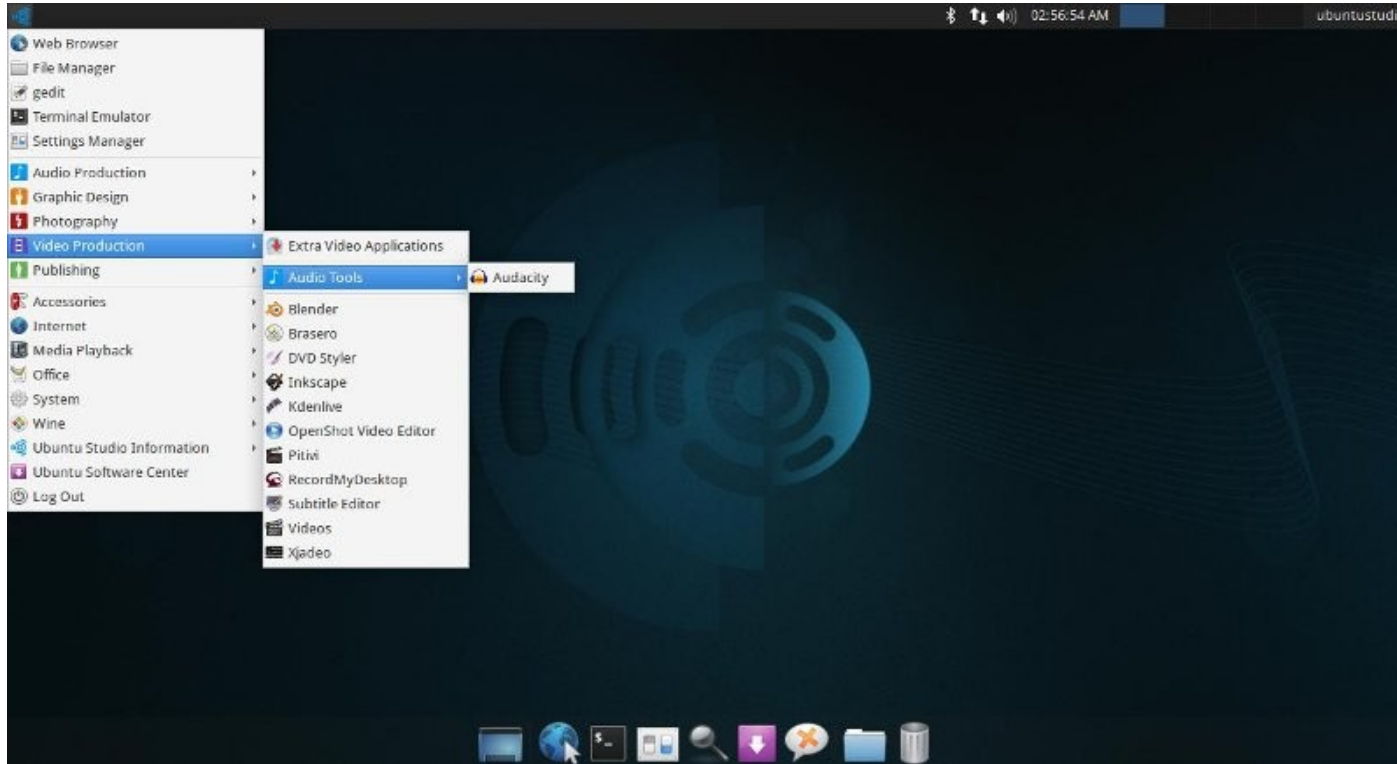
The team takes a second look into a lieutenant's death after the blogger who accused them of a cover-up turns up dead.

Tue 10/6 All Channels	7:30 PM	8:00 PM	8:30 PM	9:00 PM
74 DHC	< Pregnant for 46 Years (Special)	I Didn't Know I Was Pregnant (Medical)	I Didn't Know I Was Pregnant (Medical)	Deliver Me (Reality) >
2 WUPL	Are You Smarter Than a 5th Grader? (Game show)	Deal or No Deal (Game show)	Deal or No Deal (Game show)	WWL's Eyewitness News (News)
3 WWL	< NCIS (Crime drama)	NCIS: Los Angeles (Crime drama)		The Good Wife (Drama) >
5 TLC	Cake Boss (Cooking)	18 Kids and Counting: 20 Years, 20 Duggars (Special)		Child Frozen in Time (Special) >
7 WDSU	< The Biggest Loser (Reality)			The Jay Leno Show (Entertainment) >

Ubuntu Studio

- Ubuntu Studio is an officially recognized derivative of the Ubuntu Linux distribution, which is explicitly geared to general multimedia production.
- The original version, based on Ubuntu 7.04, was released on 10 May 2007.
- Web: <http://ubuntustudio.org>

ubuntustudio



Third Party Ubuntu Distributions

› **Linux Mint**

- › Most popular Linux flavor that synchronizes its release-cycle with Ubuntu's LTS, and is tailored to user-friendliness for desktop users. Also features a Debian-based edition.

› **Blackbuntu**

- › Security based distro of Ubuntu.

› **Cubuntu**

- › Ubuntu-based distribution with the Cinnamon interface.

› **Goobuntu**

- › An Ubuntu-based distribution used internally by Google. Not available outside of Google.

Thank you

*This presentation is created using LibreOffice Impress 4.2.7.2,
can be used freely as per GNU General Public License*

Web Resources

<http://tusharkute.com>

Blogs

<http://digitallocha.blogspot.in>
<http://kyamputar.blogspot.in>