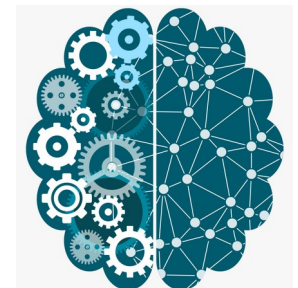


Advantages and Disadvantages of AI

Tushar B. Kute,
<http://tusharkute.com>



Advantages of Artificial Intelligence

- Reduction in Human Error
 - One of the biggest advantages of Artificial Intelligence is that it can significantly reduce errors and increase accuracy and precision.
 - The decisions taken by AI in every step is decided by information previously gathered and a certain set of algorithms.
 - When programmed properly, these errors can be reduced to null.

Advantages of Artificial Intelligence

- Zero Risks
 - Another big advantage of AI is that humans can overcome many risks by letting AI robots do them for us.
 - Whether it be defusing a bomb, going to space, exploring the deepest parts of oceans, machines with metal bodies are resistant in nature and can survive unfriendly atmospheres.
 - Moreover, they can provide accurate work with greater responsibility and not wear out easily.

Advantages of Artificial Intelligence

- 24x7 Availability
 - There are many studies that show humans are productive only about 3 to 4 hours in a day.
 - Humans also need breaks and time offs to balance their work life and personal life. But AI can work endlessly without breaks.
 - They think much faster than humans and perform multiple tasks at a time with accurate results.
 - They can even handle tedious repetitive jobs easily with the help of AI algorithms.

Advantages of Artificial Intelligence

- Digital Assistance
 - Almost all the big organizations these days use digital assistants to interact with their customers which significantly minimizes the need for human resources.
 - You can chat with a chatbot and ask them exactly what you need.
 - Some chatbots have become so intelligent these days that you wouldn't be able to determine whether you are chatting with a chatbot or a human being.

Advantages of Artificial Intelligence

- New Inventions
 - AI has helped in coming up with new inventions in almost every domain to solve complex problems.
 - A recent invention has helped doctors to predict early stages of breast cancer in women using advanced AI-based technologies.

Advantages of Artificial Intelligence

- Unbiased Decisions
 - Human beings are driven by emotions, whether we like it or not.
 - AI on the other hand, is devoid of emotions and highly practical and rational in its approach.
 - A huge advantage of Artificial Intelligence is that it doesn't have any biased views, which ensures more accurate decision-making.

Disadvantages of Artificial Intelligence

- High Costs
 - The ability to create a machine that can simulate human intelligence is no small feat.
 - It requires plenty of time and resources and can cost a huge deal of money.
 - AI also needs to operate on the latest hardware and software to stay updated and meet the latest requirements, thus making it quite costly.

Disadvantages of Artificial Intelligence

- No creativity
 - A big disadvantage of AI is that it cannot learn to think outside the box.
 - AI is capable of learning over time with pre-fed data and past experiences, but cannot be creative in its approach.
 - A classic example is the bot Quill who can write Forbes earning reports. These reports only contain data and facts already provided to the bot.
 - Although it is impressive that a bot can write an article on its own, it lacks the human touch present in other Forbes articles.

Disadvantages of Artificial Intelligence

- Increase in Unemployment
 - Perhaps one of the biggest disadvantages of artificial intelligence is that AI is slowly replacing a number of repetitive tasks with bots.
 - The reduction in the need for human interference has resulted in the death of many job opportunities.
 - A simple example is the chatbot which is a big advantage to organizations, but a nightmare for employees.
 - A study by McKinsey predicts that AI will replace at least 30 percent of human labour by 2030.

Disadvantages of Artificial Intelligence

- Make Humans Lazy
 - AI applications automate the majority of tedious and repetitive tasks.
 - Since we do not have to memorize things or solve puzzles to get the job done, we tend to use our brains less and less.
 - This addiction to AI can cause problems to future generations.

Disadvantages of Artificial Intelligence

- No Ethics
 - Ethics and morality are important human features that can be difficult to incorporate into an AI.
 - The rapid progress of AI has raised a number of concerns that one day, AI will grow uncontrollably, and eventually wipe out humanity.
 - This moment is referred to as the AI singularity.

Summary

- Artificial intelligence has massive potential for creating a better world to live in.
- The most important role for humans will be to ensure that the rise of the AI doesn't get out of hand.
- Although there are both debatable pros and cons of artificial intelligence , its impact on the global industry is undeniable.
- It continues to grow every single day driving sustainability for businesses.

Thank you

This presentation is created using LibreOffice Impress 7.4.1.2, can be used freely as per GNU General Public License



@mitu_skillologies



@mITuSkillologies



@mitu_group



@mitu-skillologies



@MITUSkillologies

kaggle

@mituskillologies

Web Resources

<https://mitu.co.in>

<http://tusharkute.com>



@mituskillologies

contact@mitu.co.in

tushar@tusharkute.com